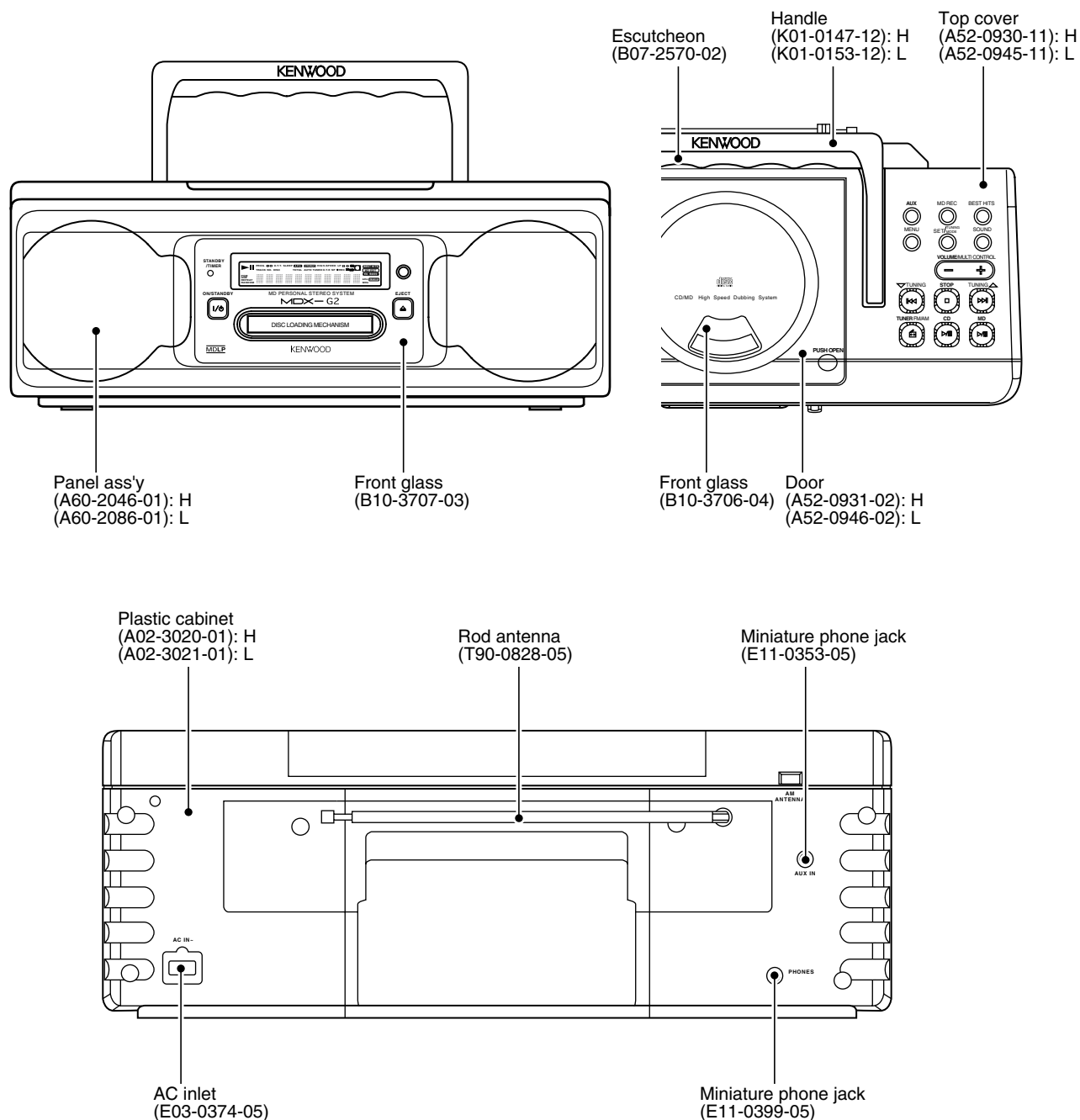


# MDX-G2-H/-L

## SERVICE MANUAL

**Note:** Please contact KENWOOD service in your side if you want to get the AC power cord.



H: Black Gray, L: Blue

In compliance with Federal Regulations, following are reproduction of labels on, or inside the product relating to laser product safety.

KENWOOD-Corp. certifies this equipment conforms to DHHS Regulations No.21 CFR 1040. 10, Chapter 1, subchapter J.

**DANGER : Laser radiation when open and interlock defeated. AVOID DIRECT EXPOSURE TO BEAM.**



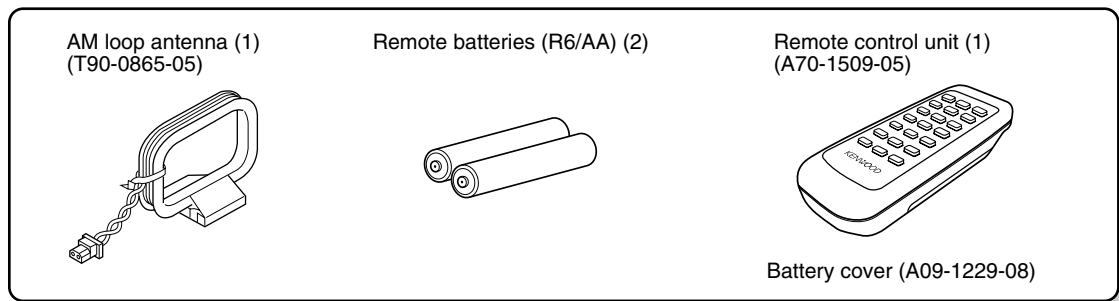
# MDX-G2-H/-L

## CONTENTS / ACCESSORIES / CAUTIONS

### Contents

CONTENTS / ACCESSORIES / CAUTIONS .....	2	EXPLODED VIEW .....	17
ADJUSTMENT .....	3	PARTS LIST .....	19
PC BOARD .....	4	SPECIFICATIONS .....	Back cover
SCHEMATIC DIAGRAM .....	7		

### Accessories



### Cautions

#### Note related to transportation and movement

Before transporting or moving this unit, carry out the following operations.

- (1) Remove the CD or MD from the unit.
- (2) Press the ►/■ key of the MD.
- (3) Wait for some time and verify that the display becomes as shown in the figure.



- (4) Press the ►/■ key of the CD.
- (5) Wait for some time and verify that the display becomes as shown in the figure.



- (6) Wait a few seconds and turn the unit OFF.

#### Operation to reset

The microcomputer may fall into malfunction when a cord is unplugged and plugged again while the unit is ON or due to an external cause. In such a case, the microcomputer should be reset as described below:  
Unplug the power cord from the wall outlet and, while holding the ON/STANDBY I/O key depressed, plug the power cord again. This initializes the microcomputer. Note that this clears the previously stored memory.

#### The marking of products using lasers (Except for some areas)

**CLASS 1  
LASER PRODUCT**

The marking is located on the rear panel and says this product has been classified as Class 1. It means that there is no danger of hazardous radiation outside the product

**CAUTION**  
INVISIBLE LASER RADIATION  
WHEN OPEN. AVOID EXPOSURE  
TO BEAM.

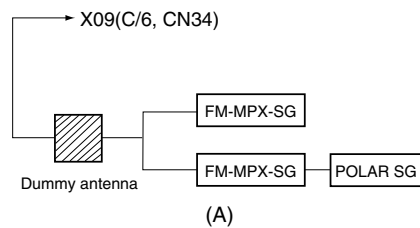
Inside this laser product, laser diodes classified as Class 3A and 3B laser radiation are contained as alerted by the internal caution label shown above. To avoid exposure to laser beams, do not open the cover.

## ADJUSTMENTS

### Tuner adjustment

No.	ITEM	INPUT SETTINGS	OUTPUT SETTINGS	RECEIVER SETTINGS	ALIGNMENT POINTS	ALIGN FOR	FIG.
<b>FM SECTION :</b>		<b>SELECTOR : FM</b>					
1	TUNING LEVEL	(A) 98.0MHz MONO 1kHz, $\pm 75$ kHz dev. 35.2dBf (ANT. input)	—	MONO 98.0MHz	X09 C/6 VR31	Adjust VR1 and stop at the point where ED1(TUNED) goes on.	

### SYSTEM CONNECTIONS



### CD player check

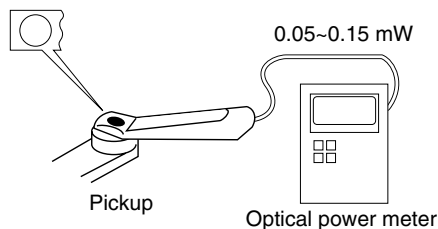
No.	ITEM	INPUT SETTING	OUTPUT SETTING	PLAYER SETTING	ALIGNMENT POINT	ALIGN FOR	FIG.
For this adjustment, enter the test mode. <b>TEST MODE :</b> While pressing the [CD PLAY/PAUSE] key, turn power on.							
1	LASER POWER	—	Set the sensor section of the optical power meter on the pickup lens.	Short circuit *OPEN/CLOSE SW. Press the "PLAY" key to check that the display is "03". *CN26(①,②), X09	—	On the power from 0.05 to 0.15mW. when the diffraction grating is correctly aligned with the RF level of 0.8Vp-p or more	(a)
2	LASER CURRENT	Test disc Type 4	Connect the DC voltmeter to CN25(#1 and #2) in X09(B/6)	Press the "PLAY" key to check that the display is "03" or "05"	—	220mV to 550mV	

Note:

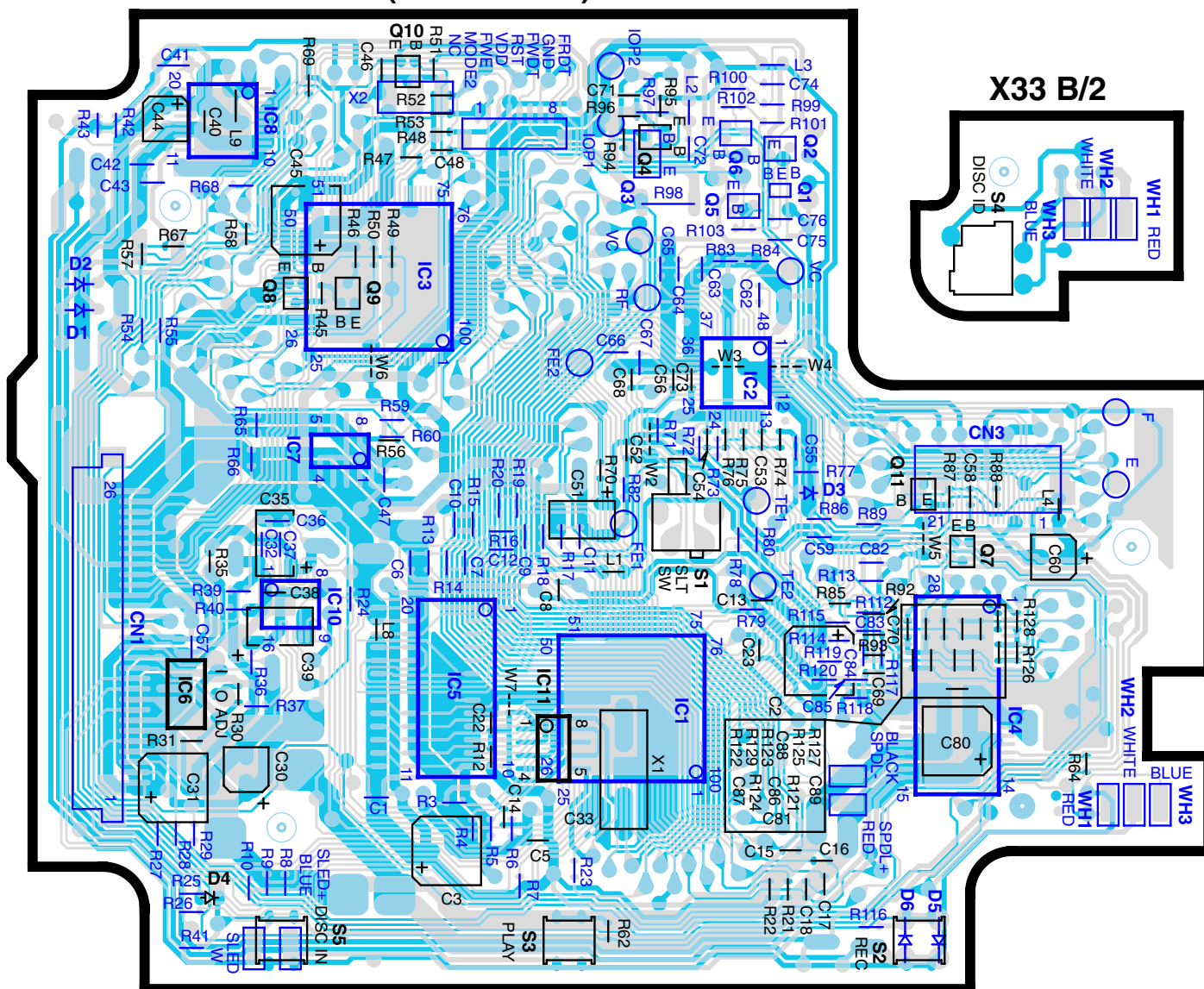
Type 4disc :SONY YEDS-18 Test Disc or equivalent. (KTD-02)

LPF : Around 47k $\Omega$  + 390pF or so.

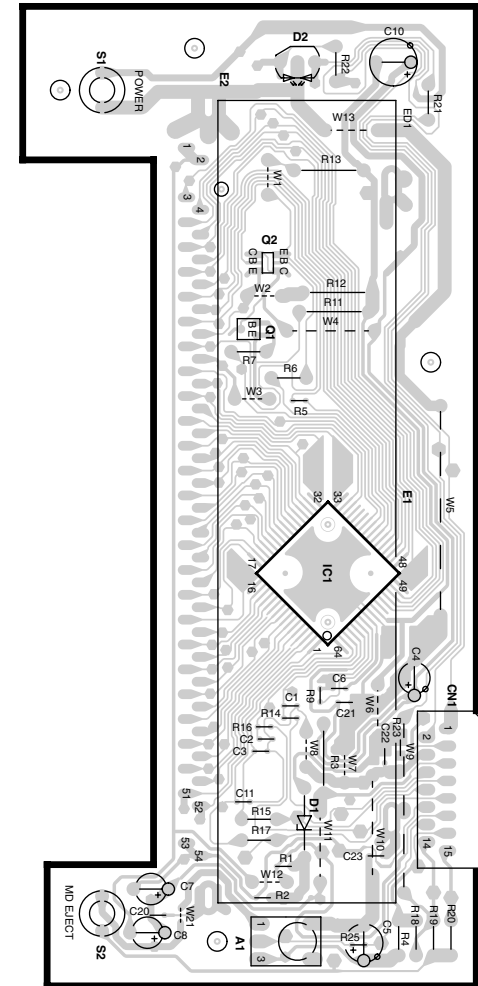
#### (a) Laser Power



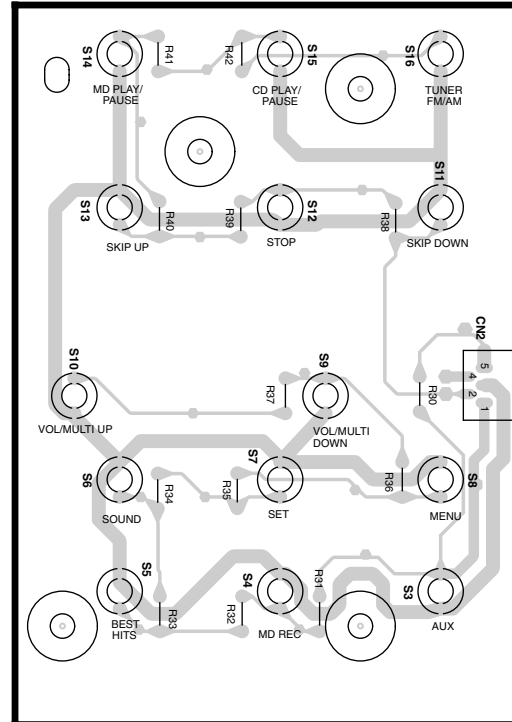
**X33 B/2**



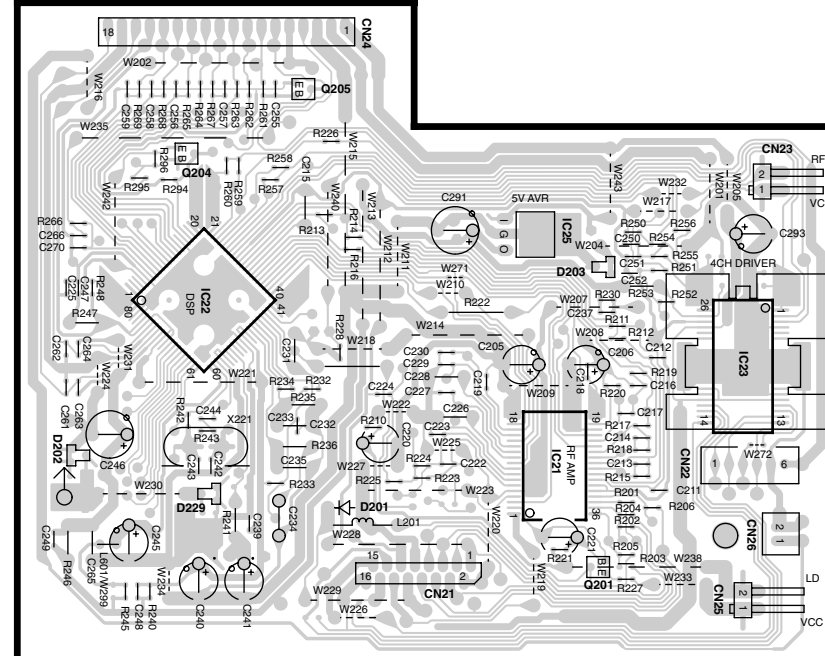
X09 F/6



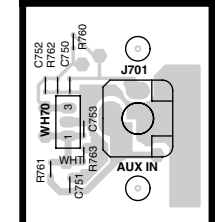
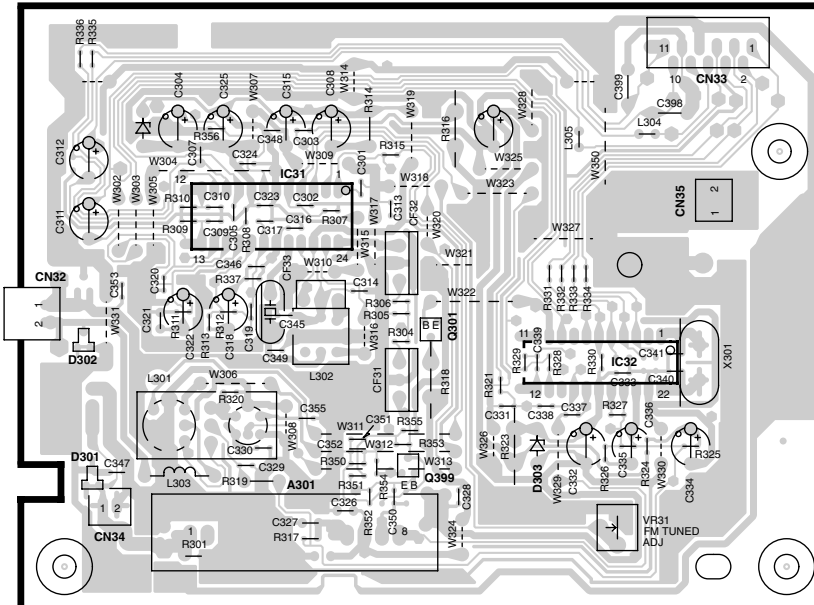
X09 E/6



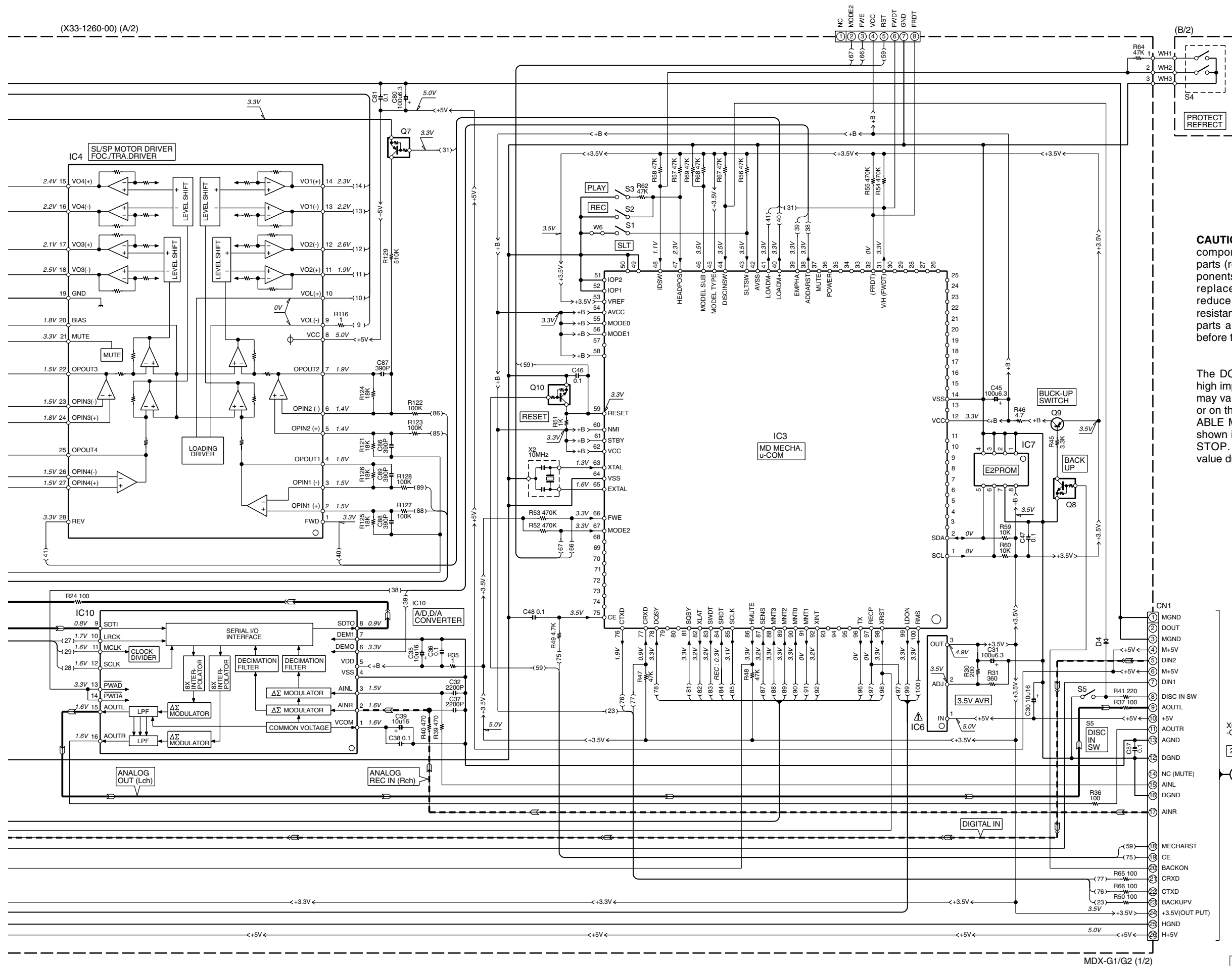
X09 B/6



**X09 C/6**







**CAUTION:** For continued safety, replace safety critical components only with manufacturer's recommended parts (refer to parts list). ⚠ indicates safety critical components. For continued protection against risk of fire, replace only with same type and rating fuse(s). To reduce the risk of electric shock, leakage-current or resistance measurements shall be carried out (exposed parts are acceptably insulated from the supply circuit) before the appliance is returned to the customer.

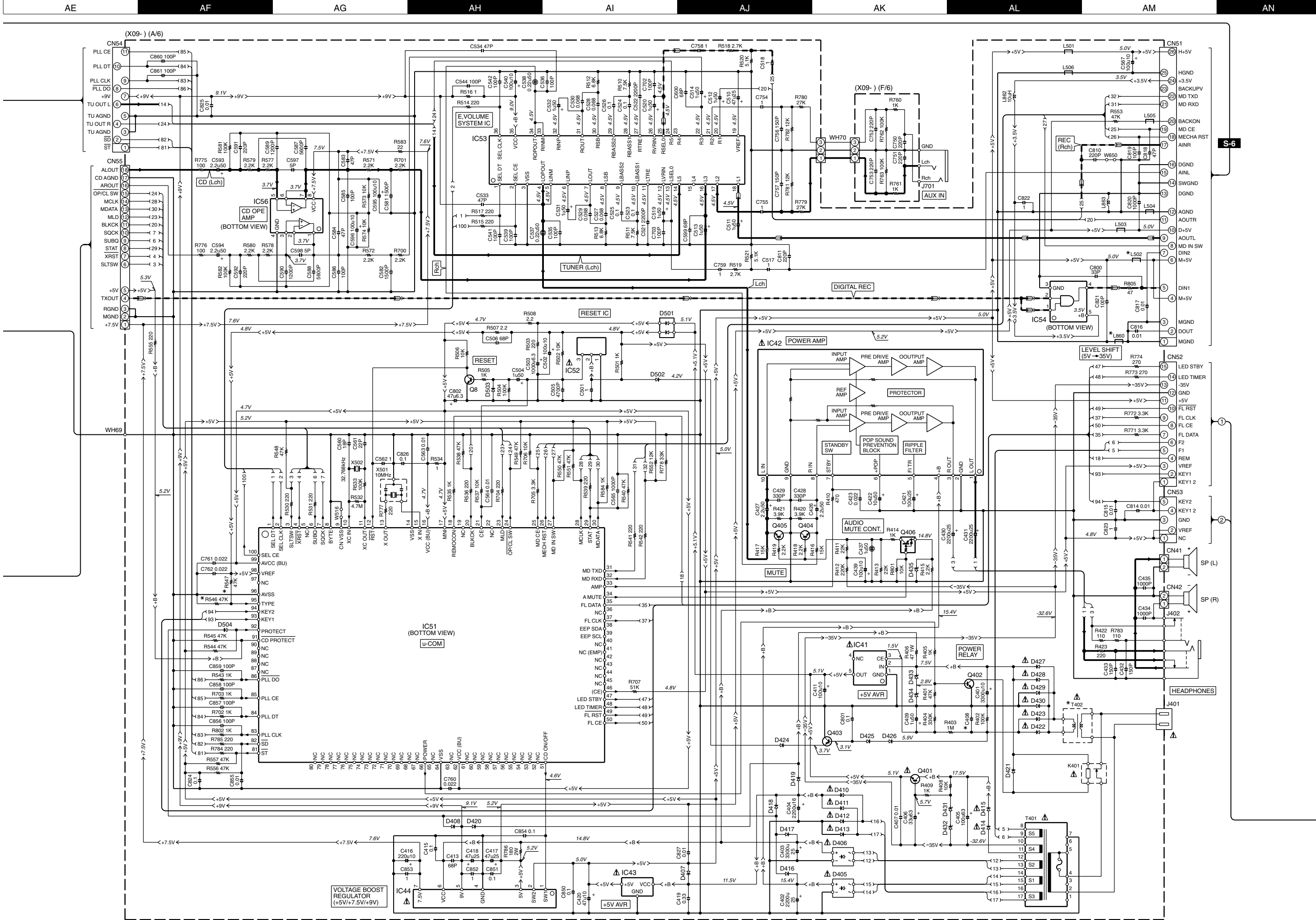
The DC voltage is an actual reading measured with a high impedance type voltmeter. The measurement value may vary depending on the measuring instruments used or on the product. Refer to the voltage during RECORDABLE MD PLAY unless otherwise specified; The value shown in ( ) is the voltage measured at the moment of STOP. The voltage followed by (REC) refers to the value during MD RECORDING.

# MDX-G2-H/-L

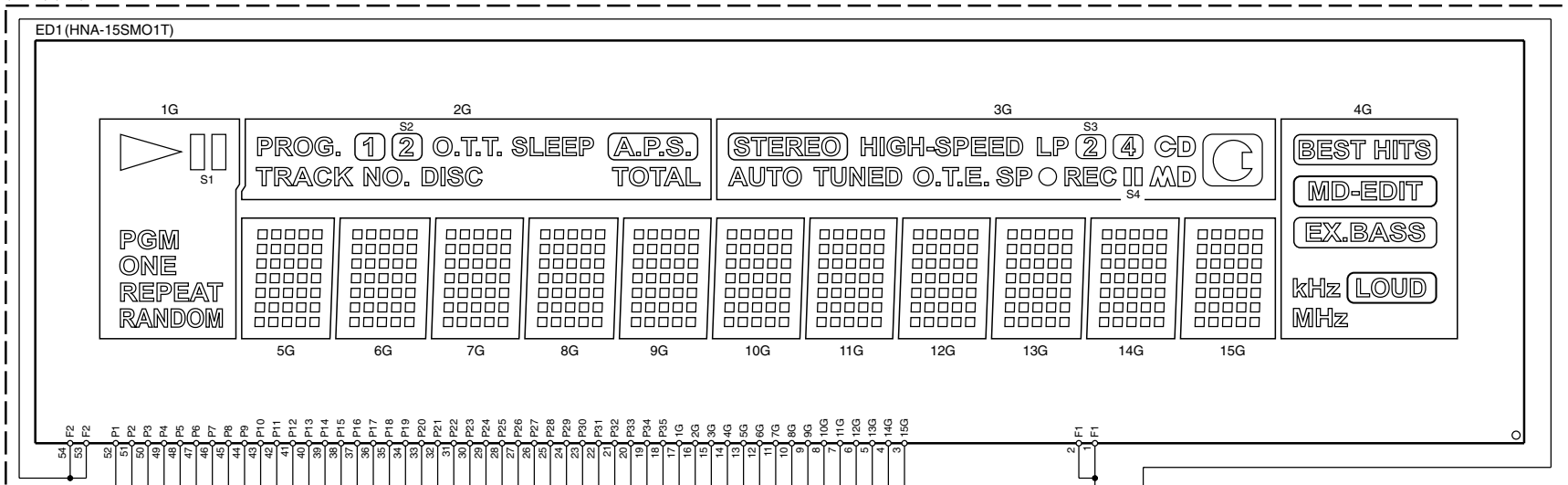
## KENWOOD







(X09-) (D/6)



	1G	2G	3G	4G	5G-15G
P1	(S1)	—	—	—	1-1
P2		—	—	—	1-2
P3	PGM	—	—	—	1-3
P4	ONE	—	—	—	1-4
P5	REPEAT	—	—	—	1-5
P6	RANDOM	—	—	—	2-1
P7	—	PROG.	—	—	2-2
P8	—	(S3)	—	—	2-3
P9	—	(S4)	—	—	2-4
P10	—	O.T.T.	—	—	2-5
P11	—	SLEEP	—	—	3-1
P12	—		—	—	3-2
P13	—	TRACK	—	—	3-3
P14	—	NO.	—	—	3-4
P15	—	DISC	—	—	3-5
P16	—	TOTAL	—	—	4-1
P17	—	—		—	4-2
P18	—	—	HIGH-SPEED	—	4-3
P19	—	—	LP	—	4-4
P20	—	—	(S3)	—	4-5
P21	—	—	(S4)	—	5-1
P22	—	—		—	5-2
P23	—	—	AUTO	—	5-3
P24	—	—	TUNED	—	5-4
P25	—	—	O.T.E.	—	5-5
P26	—	—	SP	—	6-1
P27	—	—		—	6-2
P28	—	—	REC	—	6-3
P29	—	—	(S4)	—	6-4
P30	—	—			6-5
P31	—	—			7-1
P32	—	—	—		7-2
P33	—	—	—		7-3
P34	—	—	—	kHz	7-4
P35	—	—	—	MHz	7-5

1-1	1-2	1-3	1-4	1-5
2-1	2-2	2-3	2-4	2-5
3-1	3-2	3-3	3-4	3-5
4-1	4-2	4-3	4-4	4-5
5-1	5-2	5-3	5-4	5-5
6-1	6-2	6-3	6-4	6-5
7-1	7-2	7-3	7-4	7-5

(5G-15G)

- IC1 : LC75710NED  
IC21 : AN8806SBM  
IC22 : MN662748RPMFA  
IC23 : AN4801SB-E1  
IC25 : BA05FP  
IC31 : TA2099N  
IC32 : LC72131  
IC41 : XC62HR5102P  
IC42 : LA4262  
IC43 : TA7805S  
IC44 : AN80T03  
IC51 : M30622MCAB30FP  
IC52 : S-80840ANY  
IC53 : LC75343M  
IC54 : TC7SH08FU  
IC56 : NJM4565MD

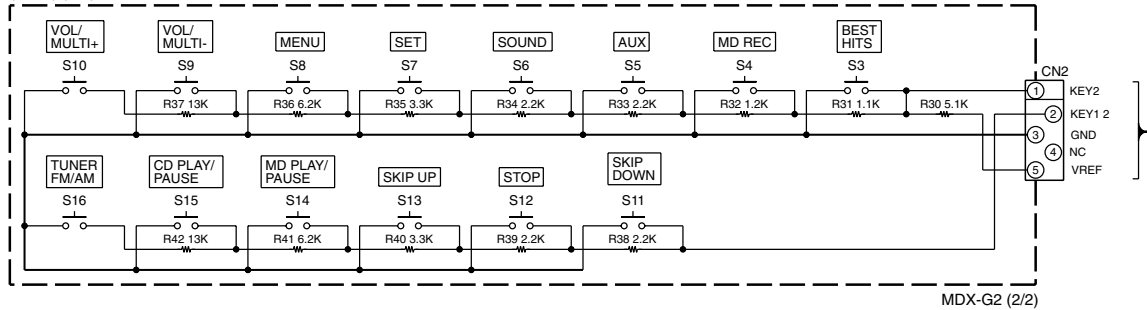
- Q1 : 2SC4081 (R,S)  
Q2 : HN1C01F  
Q8,402 : 2SC1740S(Q,R) or 2SC2785 (F,E)  
Q201,204 : 2SA1577 (Q,R)  
Q205,399 : 2SC4081 (R,S)  
Q301 : DTA114EUA  
Q401 : 2SC3940A (R,S) or 2SD1768S  
Q403 : 2SA933AS(Q,R) or 2SA1175 (F,E)  
Q404,405 : 2SC2878 (B)  
Q406 : DTA124ESA

- D1 : MTZJ6.2 (B) or RD6.2ES (B)  
D2 : B30-2601-05  
D201,407,408,416-418, 420-426,502-504 : 1SS133  
D202,203,229,301,302 : 1SS302 or DA204U  
D303 : MTZJ5.1 (B) or RD5.1ES (B)  
D405,406 : D2SB2A20F03  
D410-415,419,427-430 : 1T2 or S5688B  
D431,432 : MTZJ20 (B) or RD20ES (B)  
D433 : MTZJ4.7 (B) or RD4.7ES (B)  
D434 : MTZJ2.7 (B) or RD2.7ES (B)  
D435 : MTZJ3.9 (B) or RD3.9ES (B)  
D501 : 1SS402

**CAUTION:** For continued safety, replace safety critical components only with manufacturer's recommended parts (refer to parts list). ⚠ indicates safety critical components. For continued protection against risk of fire, replace only with same type and rating fuse(s). To reduce the risk of electric shock, leakage-current or resistance measurements shall be carried out (exposed parts are acceptably insulated from the supply circuit) before the appliance is returned to the customer.

The DC voltage is an actual reading measured with a high impedance type voltmeter. The measurement value may vary depending on the measuring instruments used or on the product. Refer to the voltage during RECORD-ABLE MD PLAY unless otherwise specified; The value shown in ( ) is the voltage measured at the moment of STOP. The voltage followed by (REC) refers to the value during MD RECORDING.

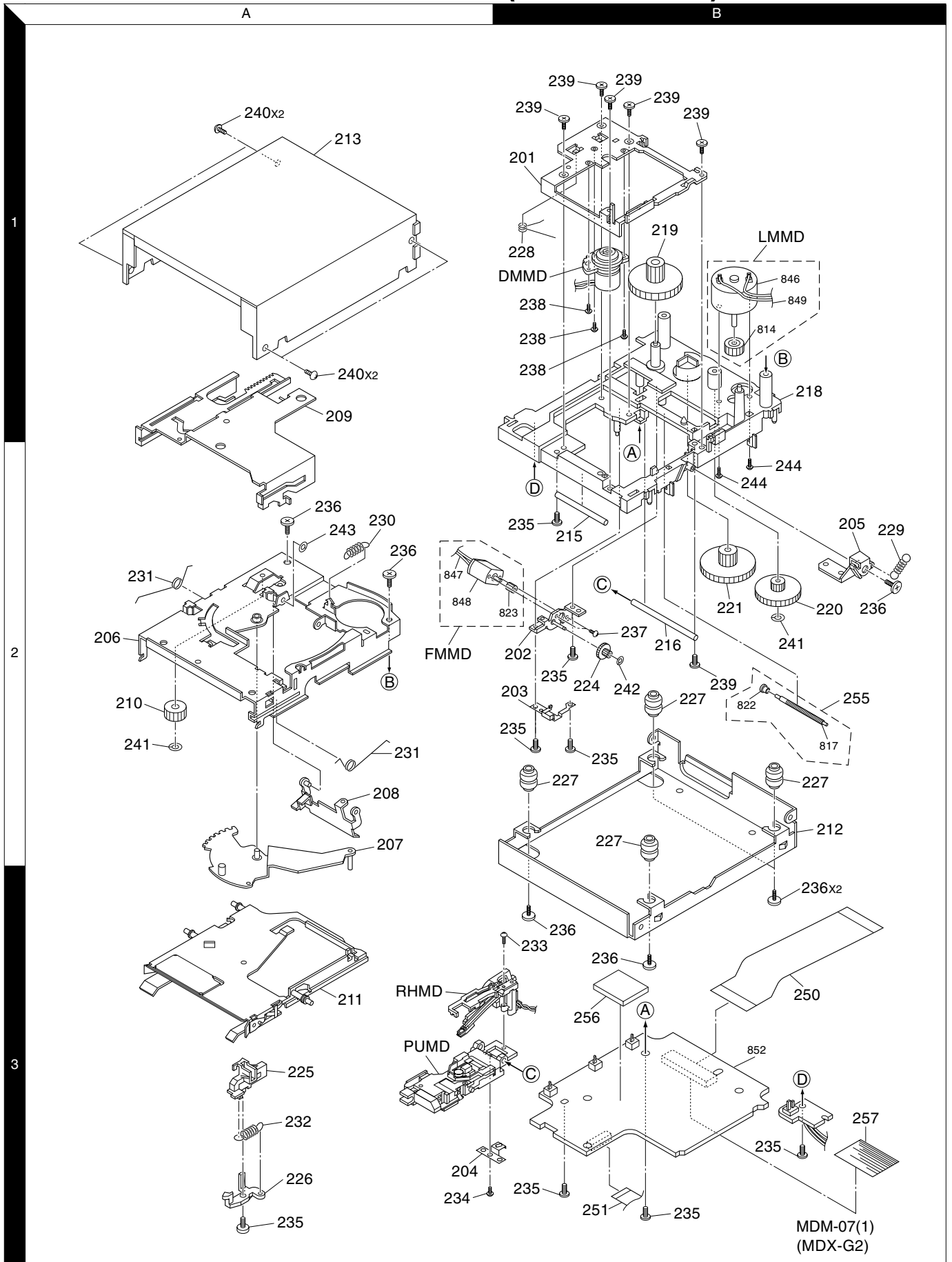
(X09-) (E/6)



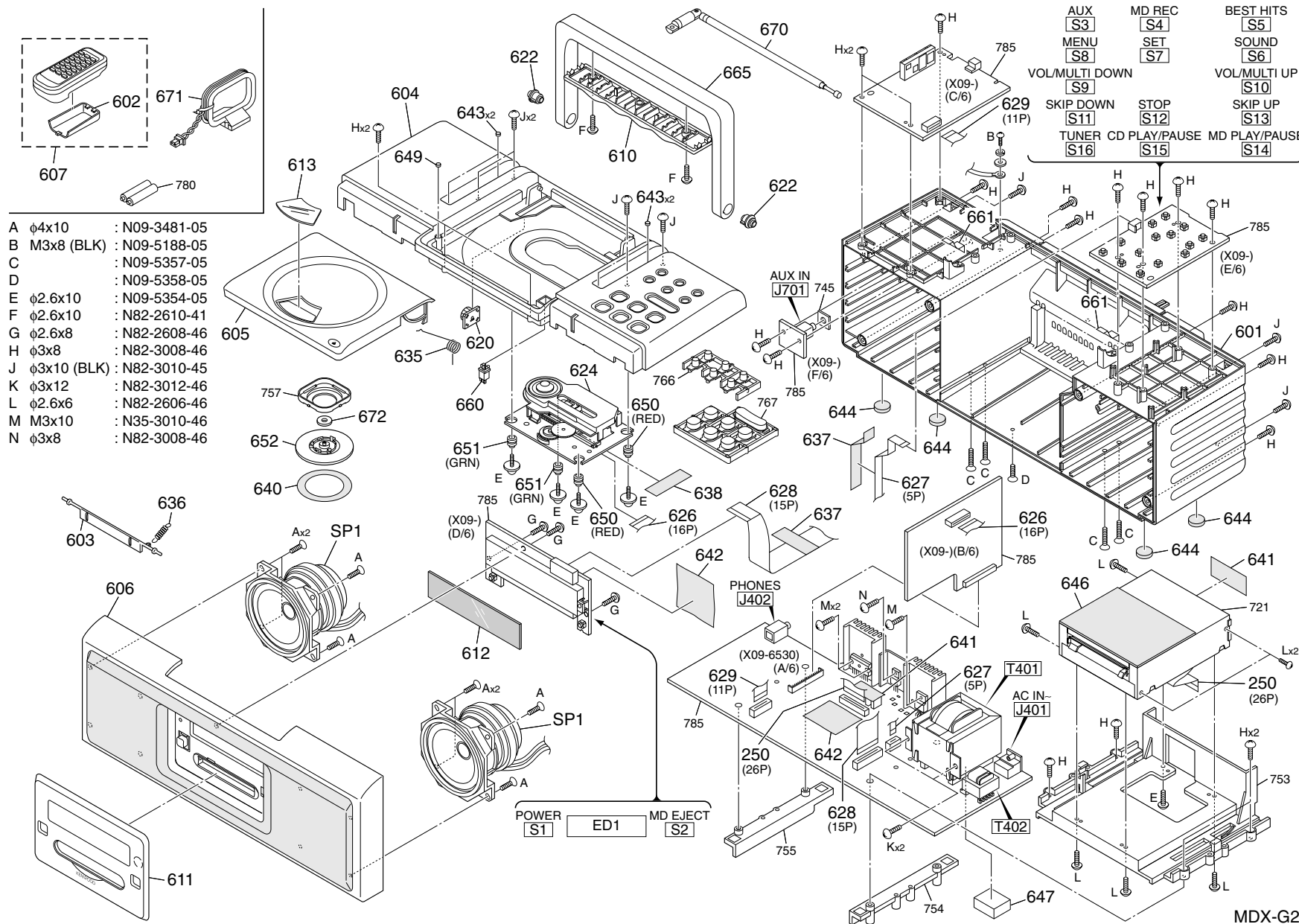
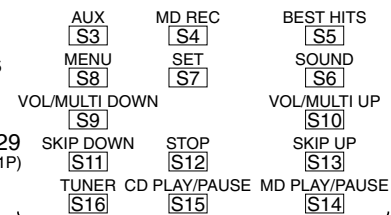
MDX-G2-H/L (X09-653X-XX)

DESTINATION		UNIT No.	C408	L502, 860	L601	R245	R546	R547	T402	W299
COUNTRY	ABB.									
JAPAN	J	0-00	0.033	YES	NO	4.7	YES	NO	L07-2758-05	YES
GENERAL MARKET	M	0-21	0.047	NO	YES	91	NO	YES	L07-2980-05	NO

## EXPLODED VIEW (MECHANISM)



Parts with exploded numbers larger than 700 are not supplied.



18 Parts with exploded numbers larger than 700 are not supplied.

\* New Parts

Parts without **Parts No.** are not supplied.

Les articles non mentionnés dans le **Parts No.** ne sont pas fournis.

Teile ohne **Parts No.** werden nicht geliefert.

①

Ref. No	Add-ress	New Parts	Parts No.	Description	Desti-nation	Re-marks
<b>MDX-G2 H: BLACK GREY, B: BLUE</b>						
601	1E	*	A02-3020-01	PLASTIC CABINET	H	
601	1E	*	A02-3021-01	PLASTIC CABINET	L	
602	1C		A09-1229-08	BATTERY COVER		
603	2E	*	A29-1157-04	PANEL	L	
603	2E	*	A29-1166-04	PANEL	H	
604	1C	*	A52-0930-11	TOP COVER	H	
604	1C	*	A52-0945-11	TOP COVER	L	
605	1C	*	A52-0931-02	DOOR	H	
605	1C	*	A52-0946-02	DOOR	L	
606	2C	*	A60-2046-01	PANEL ASSY	H	
606	2C	*	A60-2086-01	PANEL ASSY	L	
607	1C		A70-1509-05	REMOTE CONTROLLER ASSY		
610	1D	*	B07-2570-02	ESCUTCHEON		
611	2C	*	B10-3707-03	FRONT GLASS		
612	2D	*	B11-1535-04	COLOR FILTER		
613	1C	*	B10-3706-04	FRONT GLASS		
-			B58-0966-13	CAUTION CARD		
-		*	B60-5052-00	INSTRUCTION MANUAL		
620	1D		D39-0353-05	DAMPER		
622	1D	*	D21-2909-04	SHAFT		
624	1D		D40-1734-05	MECHANISM ASSY		
626	2D,2E		E35-2894-05	FLAT CABLE		
627	2E		E35-2895-05	FLAT CABLE		
628	2D		E35-2896-05	FLAT CABLE		
629	2D,1E		E35-2897-05	FLAT CABLE		
635	1C	*	G01-4286-04	TORSION COIL SPRING		
636	2C	*	G01-4287-04	EXTENSION SPRING		
637	1D,2D		G10-0485-04	NON-WOVEN FABRIC		
638	2D		G10-0489-04	NON-WOVEN FABRIC		
640	2C		G10-0521-04	NON-WOVEN FABRIC		
641	2E		G10-0584-04	NON-WOVEN FABRIC		
642	2D	*	G10-0585-04	NON-WOVEN FABRIC		
643	1D		G11-2758-04	CUSHION		
644	1E,2E		G11-2833-04	CUSHION		
646	2E		G10-0587-04	NON-WOVEN FABRIC		
647	2E	*	G11-2852-04	CUSHION		
649	1C	*	G11-2853-04	CUSHION		
-		*	H12-3525-05	PACKING FIXTURE		
-		*	H12-3526-05	PACKING FIXTURE		
-			H21-1506-04	PROTECTION SHEET		
-			H25-1642-04	PROTECTION BAG		
-		*	H50-4204-04	ITEM CARTON CASE	H	
-		*	H50-4205-04	ITEM CARTON CASE	L	
650	1D,2D		J02-1471-05	INSULATOR		
651	1D,2D		J02-1505-05	INSULATOR		
652	1C		J11-0873-02	CLAMPER		
660	1D		J52-0044-05	PUSH LATCH		
661	1E	*	J39-1040-04	SPACER		
665	1D	*	K01-0147-12	HANDLE	H	
665	1D	*	K01-0153-12	HANDLE	L	

L : Scandinavia

Y : PX(Far East,Hawaii)

Y : AAFES(Europe)

K : USA

T : England

X : Australia

P : Canada

E : Europe

Q : Russia

R : Mexico

G : Germany

H : Korea

C : China

V : China(Shanghai)

M : Other Areas

I : Malaysia

Δ indicates safety critical components .

\* New Parts

Parts without **Parts No.** are not supplied.

Les articles non mentionnés dans le **Parts No.** ne sont pas fournis.

Teile ohne **Parts No.** werden nicht geliefert.

②

Ref. No	Add-ress	New Parts	Parts No.	Description	Desti-nation	Re-marks
Δ T401	2E		L07-2985-05	POWER TRANSFORMER		
670	1D		T90-0828-05	ROD ANTENNA		
671	1C		T90-0865-05	LOOP ANTENNA		
672	1C		T99-0613-05	MAGNET		
SP1	2C,2D	*	T07-0904-05	FULLRANGE		
<b>AUDIO (X09-6530-21)</b>						
D2			B30-2601-05	LED(GREEN/RED LED)		
C1			CK73GB1H103K	CHIP C	0.010UF	K
C2			CK73GB1H682K	CHIP C	6800PF	K
C3			CC73GCH1H221J	CHIP C	220PF	J
C4			CE04RW0J220M	ELECTRO	22UF	6.3WV
C5			CE04RW0J470M	ELECTRO	47UF	6.3WV
C6			CC73GCH1H330J	CHIP C	33PF	J
C7 ,8			CE04RW1H010M	ELECTRO	1.0UF	50WV
C10			CE04RW1H100M	ELECTRO	10UF	50WV
C11			CC73GCH1H221J	CHIP C	220PF	J
C20			CK73GB1H472K	CHIP C	4700PF	K
C21			CK73GB1C104K	CHIP C	0.10UF	K
C22			CC73GCH1H101J	CHIP C	100PF	J
C23			CK73GB1H103K	CHIP C	0.010UF	K
C205,206			CE04KW1A101M	ELECTRO	100UF	10WV
C211,212			CK73GB1C104K	CHIP C	0.10UF	K
C213			CC73GCH1H331J	CHIP C	330PF	J
C214			CC73GCH1H221J	CHIP C	220PF	J
C215			CK45FB1H471K	CERAMIC	470PF	K
C216,217			CK73GB1E223K	CHIP C	0.022UF	K
C218			CK73GB1C333K	CHIP C	0.033UF	K
C219			CC73GCH1H331J	CHIP C	330PF	J
C220,221			CE04KW1A101M	ELECTRO	100UF	10WV
C222			CC73GCH1H030C	CHIP C	3.0PF	C
C223			CK73GB1A334K	CHIP C	0.33UF	K
C224			CC73GCH1H100D	CHIP C	10PF	D
C225			CC73GCH1H101J	CHIP C	100PF	J
C226			CQ93FMG1H104J	MYLAR	0.10UF	J
C227			CK73GB1H222K	CHIP C	2200PF	K
C228			CQ93FMG1H223J	MYLAR	0.022UF	J
C229			CK73GB1H472K	CHIP C	4700PF	K
C230			CK73GB1H222K	CHIP C	2200PF	K
C231			CQ93FMG1H102J	MYLAR	1000PF	J
C232			CQ93FMG1H223J	MYLAR	0.022UF	J
C233			CK73GB1E223K	CHIP C	0.022UF	K
C234			CF92FV1H564J	MF-C	0.56UF	J
C235			CQ93FMG1H122J	MYLAR	1200PF	J
C237			CC73GCH1H470J	CHIP C	47PF	J
C239			CK73GB1C104K	CHIP C	0.10UF	K
C240			CE04KW1A101M	ELECTRO	100UF	10WV
C241			CE04KW1HR33M	ELECTRO	0.33UF	50WV
C242			CC73GCH1H150J	CHIP C	15PF	J
C243			CC73GCH1H120J	CHIP C	12PF	J
C244			CK73GB1H102K	CHIP C	1000PF	K
C245			CE04KW1E470M	ELECTRO	47UF	25WV
C246			CE04KW1A221M	ELECTRO	220UF	10WV
C247			CK73GB1C104K	CHIP C	0.10UF	K

L : Scandinavia

Y : PX(Far East,Hawaii)

Y : AAFES(Europe)

K : USA

T : England

X : Australia

P : Canada

E : Europe

Q : Russia

R : Mexico

G : Germany

H : Korea

C : China

V : China(Shanghai)

M : Other Areas

I : Malaysia

Δ indicates safety critical components .

PARTS LIST

MDX-G2-S/-W/-Y

\* New Parts  
Parts without **Parts No.** are not supplied.  
Les articles non mentionnés dans le **Parts No.** ne sont pas fournis.  
Teile ohne **Parts No.** werden nicht geliefert.

3

Ref. No	Add-ress	New Parts	Parts No.	Description	Desti-nation	Re-marks
C248			CC73GCH1H470J	CHIP C	47PF	J
C249			CC45FCH1H050C	CERAMIC	5.0PF	C
C250			CK73GB1E223K	CHIP C	0.022UF	K
C251			CK73GB1H332K	CHIP C	3300PF	K
C252			CK73GB1E223K	CHIP C	0.022UF	K
C255			CK73GB1C104K	CHIP C	0.10UF	K
C256			CC73GCH1H101J	CHIP C	100PF	J
C257-259			CC73GCH1H221J	CHIP C	220PF	J
C261,262			CC73GCH1H100D	CHIP C	10PF	D
C263,264			CC73GCH1H150J	CHIP C	15PF	J
C265			CK45FF1H103Z	CERAMIC	0.010UF	Z
C266			CC73GCH1H680J	CHIP C	68PF	J
C270			CC73GCH1H050C	CHIP C	5.0PF	C
C291			CE04KW1A221M	ELECTRO	220UF	10WV
C293			CE04KW1H4R7M	ELECTRO	4.7UF	50WV
C301			CC73GCH1H470J	CHIP C	47PF	J
C302			CC73GCH1H151J	CHIP C	150PF	J
C303			CK73GB1H102K	CHIP C	1000PF	K
C304			CE04KW1H010M	ELECTRO	1.0UF	50WV
C305			CC73GCH1H220J	CHIP C	22PF	J
C307			CK73FB1C105K	CHIP C	1.0UF	K
C308			CE04KW1H010M	ELECTRO	1.0UF	50WV
C309,310			CK73GB1H153K	CHIP C	0.015UF	K
C311,312			CE04KW1H2R2M	ELECTRO	2.2UF	50WV
C313			CK73GB1C104K	CHIP C	0.10UF	K
C314			CC73GCH1H331J	CHIP C	330PF	J
C315			CE04KW1E470M	ELECTRO	47UF	25WV
C316			CC73GCH1H101J	CHIP C	100PF	J
C317			CK73GB1E223K	CHIP C	0.022UF	K
C318			CE04KW1H2R2M	ELECTRO	2.2UF	50WV
C319			CK73GB1E223K	CHIP C	0.022UF	K
C320			CK73GB1C104K	CHIP C	0.10UF	K
C321			CK73FB1C474K	CHIP C	0.47UF	K
C322			CE04KW1H010M	ELECTRO	1.0UF	50WV
C323			CK73GB1H102K	CHIP C	1000PF	K
C324			CK73GB1H103K	CHIP C	0.010UF	K
C325			CE04KW1E470M	ELECTRO	47UF	25WV
C326,327			CK73FB1C105K	CHIP C	1.0UF	K
C328			CC73GCH1H331J	CHIP C	330PF	J
C329			CK73GB1H103K	CHIP C	0.010UF	K
C330			CC73GCH1H040C	CHIP C	4.0PF	C
C331			CC73GCH1H470J	CHIP C	47PF	J
C332			CE04KW1H100M	ELECTRO	10UF	50WV
C333			CK73GB1H103K	CHIP C	0.010UF	K
C334			CE04KW1E470M	ELECTRO	47UF	25WV
C335			CK73GB1E223K	CHIP C	0.022UF	K
C336			CE04KW1H4R7M	ELECTRO	4.7UF	50WV
C337			CC73GCH1H101J	CHIP C	100PF	J
C338			CC73GCH1H471J	CHIP C	470PF	J
C339			CC73GCH1H101J	CHIP C	100PF	J
C340			CC73GCH1H120J	CHIP C	12PF	J
C341			CC73GCH1H100D	CHIP C	10PF	D
C345			CK73GB1C104K	CHIP C	0.10UF	K
C346			CK73GB1H103K	CHIP C	0.010UF	K
C347			CC73GCH1H331J	CHIP C	330PF	J

L : Scandinavia    K : USA    P : Canada    R : Mexico    C : China    I : Malaysia  
Y : PX(Far East,Hawaii)    T : England    E : Europe    G : Germany    V : China(Shanghai)  
Y : AAFES(Europe)    X : Australia    Q : Russia    H : Korea    M : Other Areas    ⚠ indicates safety critical components .

\* New Parts  
Parts without **Parts No.** are not supplied.  
Les articles non mentionnés dans le **Parts No.** ne sont pas fournis.  
Teile ohne **Parts No.** werden nicht geliefert.

4

Ref. No	Add-ress	New Parts	Parts No.	Description	Desti-nation	Re-marks
C348			CK73GB1H103K	CHIP C	0.010UF	K
C349			CC73GCH1H101J	CHIP C	100PF	J
C350-353			CK73GB1H103K	CHIP C	0.010UF	K
C355			CC73GCH1H101J	CHIP C	100PF	J
C398,399			CK45FB1H102K	CERAMIC	1000PF	K
C401			CE04KW1A332M	ELECTRO	3300UF	10WV
C402			C90-3930-05	ELECTRO	2200UF	25WV
C403			CE04KW1E332M	ELECTRO	3300UF	25WV
C404			CE04KW1C222M	ELECTRO	2200UF	16WV
C405			CE04DW1J101M	ELECTRO	100UF	63WV
C406			CE04KW1J330M	ELECTRO	33UF	63WV
C407			CK73GB1H103K	CHIP C	0.010UF	K
C408			CK73GB1E473K	CHIP C	0.047UF	K
C409			CK73GB0J105K	CHIP C	1.0UF	K
C411			CE04KW1A101M	ELECTRO	100UF	10WV
C413			CC73GCH1H680J	CHIP C	68PF	J
C415			CK73GF1E104Z	CHIP C	0.10UF	Z
C416			CE04KW1A221M	ELECTRO	220UF	10WV
C417,418			CE04KW1E470M	ELECTRO	47UF	25WV
C419			CK73FB1C334K	CHIP C	0.33UF	K
C420			CE04RW1A470M	ELECTRO	47UF	10WV
C421			CE04KW1E101M	ELECTRO	100UF	25WV
C422			CE04KW1H100M	ELECTRO	10UF	50WV
C423			CK73GB1E223K	CHIP C	0.022UF	K
C426,427			CE04KW1H2R2M	ELECTRO	2.2UF	50WV
C428,429			CC73GCH1H331J	CHIP C	330PF	J
C430,431			CE04KW1E222M	ELECTRO	2200UF	25WV
C432,433			CC73GCH1H151J	CHIP C	150PF	J
C434,435			CK73GB1H102K	CHIP C	1000PF	K
C437			CE04HW1H010M	NP-ELEC	1.0UF	50WV
C439			CE04KW1A101M	ELECTRO	100UF	10WV
C501			CK73GB0J105K	CHIP C	1.0UF	K
C502			CE04RW1A101M	ELECTRO	100UF	10WV
C503			CE04DW0J102M	ELECTRO	1000UF	6.3WV
C504			CE04RW1H010M	ELECTRO	1.0UF	50WV
C505			CK73GB1H472K	CHIP C	4700PF	K
C506			CC45FCH1H680J	CERAMIC	68PF	J
C510			CE04KW1E470M	ELECTRO	47UF	25WV
C511-514			CE04KW1H010M	ELECTRO	1.0UF	50WV
C517,518			CK73GB0J105K	CHIP C	1.0UF	K
C519,520			CE04KW1H010M	ELECTRO	1.0UF	50WV
C521,522			CQ93FMG1H222J	MYLAR	2200PF	J
C523-526			CK73GB1C104K	CHIP C	0.10UF	K
C527-530			CK73GB1C683K	CHIP C	0.068UF	K
C531,532			CE04KW1H010M	ELECTRO	1.0UF	50WV
C533,534			CC45FCH1H470J	CERAMIC	47PF	J
C535,536			CC45FCH1H101J	CERAMIC	100PF	J
C537,538			CE04HW1HR22M	NP-ELEC	0.22UF	50WV
C539			CC45FCH1H101J	CERAMIC	100PF	J
C540			CE04KW1A101M	ELECTRO	100UF	10WV
C541,542			CC45FCH1H101J	CERAMIC	100PF	J
C544			CC45FCH1H101J	CERAMIC	100PF	J
C560			CC45FCH1H180J	CERAMIC	18PF	J
C561			CC45FCH1H220J	CERAMIC	22PF	J
C562			CK73GB0J105K	CHIP C	1.0UF	K

L : Scandinavia    K : USA    P : Canada    R : Mexico    C : China    I : Malaysia  
Y : PX(Far East,Hawaii)    T : England    E : Europe    G : Germany    V : China(Shanghai)  
Y : AAFES(Europe)    X : Australia    Q : Russia    H : Korea    M : Other Areas    ⚠ indicates safety critical components .

PARTS LIST

MDX-G2-H/-L

\* New Parts

Parts without **Parts No.** are not supplied.

Les articles non mentionnés dans le **Parts No.** ne sont pas fournis.

Teile ohne **Parts No.** werden nicht geliefert.

5

Ref. No	Add-ress	New Parts	Parts No.	Description	Desti-nation	Re-marks
C563,564 C565 C567 C581,582 C583,584			CK45FF1H103Z CQ93FMG1H102J CE04KW1A101M CQ93FMG1H152J CC45FCH1H470J	CERAMIC 0.010UF Z MYLAR 1000PF J ELECTRO 100UF 10WV MYLAR 1500PF J CERAMIC 47PF J		
C585,586 C587,588 C589,590 C591 C592			CC45FCH1H101J CQ93FMG1H562J CQ93FMG1H122J CC45FSL1H221J CC45FCH1H221J	CERAMIC 100PF J MYLAR 5600PF J MYLAR 1200PF J CERAMIC 220PF J CERAMIC 220PF J		
C593,594 C595,596 C597,598 C599,600 C702,703			CE04KW1H2R2M CE04KW1A101M CC73GCH1H050C CC73GCH1H680J CC73GCH1H101J	ELECTRO 2.2UF 50WV ELECTRO 100UF 10WV CHIP C 5.0PF C CHIP C 68PF J CHIP C 100PF J		
C750-753 C754,755 C756,757 C758,759 C760-762			CC73GCH1H221J CK73GB0J105K CC73GCH1H151J CK73GB0J105K CK73GB1E223K	CHIP C 220PF J CHIP C 1.0UF K CHIP C 150PF J CHIP C 1.0UF K CHIP C 0.022UF K		
C800 C801 C802 C810,811 C814-817			CC73GCH1H330J CK73GB1C104K CE04RW0J470M CC73GCH1H221J CK73GB1H103K	CHIP C 33PF J CHIP C 0.10UF K ELECTRO 47UF 6.3WV CHIP C 220PF J CHIP C 0.010UF K		
C818 C819 C820 C821 C822,823			CC73GCH1H470J CC73GCH1H101J CK73GB1H102K CC73GCH1H101J CK73GB0J105K	CHIP C 47PF J CHIP C 100PF J CHIP C 1000PF K CHIP C 100PF J CHIP C 1.0UF K		
C824 C825 C826 C827 C850,851			CK73GB1C104K CK73GB1H103K CK73GB1C104K CK73GB1H103K CK73GB1C104K	CHIP C 0.10UF K CHIP C 0.010UF K CHIP C 0.10UF K CHIP C 0.010UF K CHIP C 0.10UF K		
C852,853 C854 C855 C856-861			CK73GF1A105Z CK73GB1C104K CK73GB1H103K CC73GCH1H101J	CHIP C 1.0UF Z CHIP C 0.10UF K CHIP C 0.010UF K CHIP C 100PF J		
CN1 CN2 CN21 CN22 CN23		*	E40-4725-05 E40-8495-05 E40-8328-15 E40-3250-05 E40-4974-05	FLAT CABLE CONNECTOR FLAT CABLE CONNECTOR FLAT CABLE CONNECTOR PIN ASSY PIN ASSY		
CN24 CN25 CN26 CN32 CN33			E40-9834-05 E40-4974-05 E40-4373-05 E40-8717-05 E40-8499-05	SOCKET FOR PIN ASSY PIN ASSY PIN ASSY PIN ASSY FLAT CABLE CONNECTOR		
CN34 CN35 CN41,42 CN51 CN52			E40-3246-05 E40-4373-05 E40-3299-05 E40-8461-15 E40-8481-05	PIN ASSY PIN ASSY PIN ASSY FLAT CABLE CONNECTOR FLAT CABLE CONNECTOR		

L : Scandinavia K : USA P : Canada R : Mexico C : China I : Malaysia  
Y : PX(Far East,Hawaii) T : England E : Europe G : Germany V : China(Shanghai)  
Y : AAFES(Europe) X : Australia Q : Russia H : Korea M : Other Areas Δ indicates safety critical components .

\* New Parts

Parts without **Parts No.** are not supplied.

Les articles non mentionnés dans le **Parts No.** ne sont pas fournis.

Teile ohne **Parts No.** werden nicht geliefert.

6

Ref. No	Add-ress	New Parts	Parts No.	Description	Desti-nation	Re-marks
CN53 CN54 CN55 J401 J402			E40-8476-05 E40-8479-05 E40-9851-05 E03-0374-05 E11-0399-05	FLAT CABLE CONNECTOR FLAT CABLE CONNECTOR PIN ASSY AC INLET MINIATURE PHONE JACK(7P)		
J701			E11-0353-05	MINIATURE PHONE JACK		
CF31,32 CF33 L201 L301 L302			L72-0596-05 L72-0623-05 L40-1001-17 L39-1384-05 L30-0974-05	CERAMIC FILTER CERAMIC FILTER SMALL FIXED INDUCTOR(10UH,K) COMBINATION COIL AM IFT		
L303 L304,305 L501,502 L503,504 L505			L40-1091-17 L92-0081-05 L92-0501-05 L92-0089-05 L92-0501-05	SMALL FIXED INDUCTOR CHIP FERRITE FERRITE CORE CHIP FERRITE FERRITE CORE		
L506 L601 L860 L862 L863			L92-0089-05 L92-0081-05 L92-0501-05 L40-1001-17 L92-0017-05	CHIP FERRITE CHIP FERRITE FERRITE CORE SMALL FIXED INDUCTOR(10UH,K) FERRITE CORE		
Δ T402 X221 X301 X501 X502			L07-2980-05 L77-2338-05 L77-2268-05 L78-0294-05 L77-2173-05	POWER TRANSFORMER CRYSTAL RESONATOR(33.8688MHZ) CRYSTAL RESONATOR(7.2M) RESONATOR (10.000M) CRYSTAL RESONATOR(32.768KHZ)		
R1 ,2 R5 R9 R14 R16			RK73GB1J221J RK73GB1J102J RK73GB1J103J RK73GB1J102J RK73GB1J102J	CHIP R 220 J 1/16W CHIP R 1.0K J 1/16W CHIP R 10K J 1/16W CHIP R 1.0K J 1/16W CHIP R 1.0K J 1/16W		
R23 R25 R201 R202-205 R206			RK73FB2A3R3J RK73GB1J101J RK73GB1J683J RK73GB1J333J RK73GB1J683J	CHIP R 3.3 J 1/10W CHIP R 100 J 1/16W CHIP R 68K J 1/16W CHIP R 33K J 1/16W CHIP R 68K J 1/16W		
R210 R211,212 R213 R214 R215			RK73GB1J1R0J RK73GB1J334J RK73GB1J102J RK73GB1J101J RK73GB1J513J	CHIP R 1 J 1/16W CHIP R 330K J 1/16W CHIP R 1.0K J 1/16W CHIP R 100 J 1/16W CHIP R 51K J 1/16W		
R216 R217 R218,219 R220 R221			RK73GB1J393J RK73GB1J101J RK73GB1J473J RK73GB1J104J RK73GB1J100J	CHIP R 39K J 1/16W CHIP R 100 J 1/16W CHIP R 47K J 1/16W CHIP R 100K J 1/16W CHIP R 10 J 1/16W		
R223,224 R225 R226 R227 R228			RK73GB1J562J RK73GB1J222J RK73GB1J101J RK73GB1J473J RK73GB1J221J	CHIP R 5.6K J 1/16W CHIP R 2.2K J 1/16W CHIP R 100 J 1/16W CHIP R 47K J 1/16W CHIP R 220 J 1/16W		
R230 R232 R233			RK73GB1J2R2J RK73GB1J104J RK73GB1J563J	CHIP R 2.2 J 1/16W CHIP R 100K J 1/16W CHIP R 56K J 1/16W		

L : Scandinavia K : USA P : Canada R : Mexico C : China I : Malaysia  
Y : PX(Far East,Hawaii) T : England E : Europe G : Germany V : China(Shanghai)  
Y : AAFES(Europe) X : Australia Q : Russia H : Korea M : Other Areas Δ indicates safety critical components .

PARTS LIST

MDX-G2-S/-W/-Y

\* New Parts  
Parts without **Parts No.** are not supplied.  
Les articles non mentionnés dans le **Parts No.** ne sont pas fournis.  
Teile ohne **Parts No.** werden nicht geliefert.

7

Ref. No	Add-ress	New Parts	Parts No.	Description	Desti-nation	Re-marks
R234			RK73GB1J333J	CHIP R 33K J 1/16W		
R240			RK73GB1J100J	CHIP R 10 J 1/16W		
R242			RK73GB1J331J	CHIP R 330 J 1/16W		
R243			RK73GB1J105J	CHIP R 1.0M J 1/16W		
R245			RK73GB1J910J	CHIP R 91 J 1/16W		
R248			RK73GB1J103J	CHIP R 10K J 1/16W		
R250			RK73GB1J473J	CHIP R 47K J 1/16W		
R251			RK73GB1J223J	CHIP R 22K J 1/16W		
R252			RK73GB1J102J	CHIP R 1.0K J 1/16W		
R254			RK73GB1J753J	CHIP R 75K J 1/16W		
R255			RK73GB1J682J	CHIP R 6.8K J 1/16W		
R256			RK73GB1J274J	CHIP R 270K J 1/16W		
R257			RK73GB1J103J	CHIP R 10K J 1/16W		
R258			RK73GB1J104J	CHIP R 100K J 1/16W		
R259			RK73GB1J393J	CHIP R 39K J 1/16W		
R260			RK73GB1J154J	CHIP R 150K J 1/16W		
R261			RK73GB1J102J	CHIP R 1.0K J 1/16W		
R262			RK73GB1J101J	CHIP R 100 J 1/16W		
R263-265			RK73GB1J102J	CHIP R 1.0K J 1/16W		
R266-269			RK73GB1J101J	CHIP R 100 J 1/16W		
R294			RK73GB1J104J	CHIP R 100K J 1/16W		
R295,296			RK73GB1J472J	CHIP R 4.7K J 1/16W		
R301			RK73GB1J102J	CHIP R 1.0K J 1/16W		
R304			RK73GB1J101J	CHIP R 100 J 1/16W		
R305			RK73GB1J511J	CHIP R 510 J 1/16W		
R306			RK73GB1J101J	CHIP R 100 J 1/16W		
R307			RK73GB1J103J	CHIP R 10K J 1/16W		
R308			RK73GB1J223J	CHIP R 22K J 1/16W		
R309,310			RK73GB1J512J	CHIP R 5.1K J 1/16W		
R311			RK73GB1J222J	CHIP R 2.2K J 1/16W		
R312			RK73GB1J363J	CHIP R 36K J 1/16W		
R313			RK73GB1J273J	CHIP R 27K J 1/16W		
R315			RK73GB1J681J	CHIP R 680 J 1/16W		
R316			RD14NB2E181J	RD 180 J 1/4W		
R317			RK73GB1J221J	CHIP R 220 J 1/16W		
R318			RD14NB2E121J	RD 120 J 1/4W		
R320			RK73GB1J104J	CHIP R 100K J 1/16W		
R321			RK73GB1J102J	CHIP R 1.0K J 1/16W		
R323			RD14NB2E331J	RD 330 J 1/4W		
R324			RK73GB1J101J	CHIP R 100 J 1/16W		
R325			RK73GB1J562J	CHIP R 5.6K J 1/16W		
R326,327			RK73GB1J102J	CHIP R 1.0K J 1/16W		
R328			RK73GB1J222J	CHIP R 2.2K J 1/16W		
R329			RK73GB1J102J	CHIP R 1.0K J 1/16W		
R330			RK73GB1J103J	CHIP R 10K J 1/16W		
R331			RK73GB1J102J	CHIP R 1.0K J 1/16W		
R332-336			RK73GB1J332J	CHIP R 3.3K J 1/16W		
R337			RK73GB1J222J	CHIP R 2.2K J 1/16W		
R350			RK73GB1J680J	CHIP R 68 J 1/16W		
R351			RK73GB1J332J	CHIP R 3.3K J 1/16W		
R352			RK73GB1J681J	CHIP R 680 J 1/16W		
R353			RK73GB1J331J	CHIP R 330 J 1/16W		
R354			RK73GB1J680J	CHIP R 68 J 1/16W		
R355			RK73GB1J101J	CHIP R 100 J 1/16W		
R356			RK73GB1J105J	CHIP R 1.0M J 1/16W		

L : Scandinavia Y : PX(Far East,Hawaii) Y : AAFES(Europe)  
K : USA T : England X : Australia  
P : Canada E : Europe Q : Russia  
R : Mexico G : Germany H : Korea  
C : China V : China(Shanghai) M : Other Areas  
I : Malaysia  
Δ indicates safety critical components .

\* New Parts  
Parts without **Parts No.** are not supplied.  
Les articles non mentionnés dans le **Parts No.** ne sont pas fournis.  
Teile ohne **Parts No.** werden nicht geliefert.

8

Ref. No	Add-ress	New Parts	Parts No.	Description	Desti-nation	Re-marks
R401			RK73GB1J473J	CHIP R 47K J 1/16W		
R404			RK73GB1J334J	CHIP R 330K J 1/16W		
R406			RS14KB3A470J	FL-PROOF RS 47 J 1W		
R420,421			RK73GB1J302J	CHIP R 3.0K J 1/16W		
R422			RK73GB1J111J	CHIP R 110 J 1/16W		
R501			RK73GB1J102J	CHIP R 1.0K J 1/16W		
R502			RK73GB1J103J	CHIP R 10K J 1/16W		
R504			RK73GB1J104J	CHIP R 100K J 1/16W		
R505			RK73GB1J102J	CHIP R 1.0K J 1/16W		
R506			RK73GB1J103J	CHIP R 10K J 1/16W		
R507			RK73GB1J2R2J	CHIP R 2.2 J 1/16W		
R530,531			RK73GB1J221J	CHIP R 220 J 1/16W		
R532			RK73GB1J475J	CHIP R 4.7M J 1/16W		
R533			RK73GB1J104J	CHIP R 100K J 1/16W		
R541			RK73GB1J221J	CHIP R 220 J 1/16W		
R544,545			RK73GB1J473J	CHIP R 47K J 1/16W		
R547			RK73GB1J473J	CHIP R 47K J 1/16W		
R584			RK73GB1J102J	CHIP R 1.0K J 1/16W		
R700,701			RK73GB1J222J	CHIP R 2.2K J 1/16W		
R702,703			RK73GB1J102J	CHIP R 1.0K J 1/16W		
R704			RK73GB1J221J	CHIP R 220 J 1/16W		
R705			RK73GB1J332J	CHIP R 3.3K J 1/16W		
R706			RK73GB1J103J	CHIP R 10K J 1/16W		
R760,761			RK73GB1J102J	CHIP R 1.0K J 1/16W		
R762,763			RK73GB1J104J	CHIP R 100K J 1/16W		
R773,774			RK73GB1J271J	CHIP R 270 J 1/16W		
R777			RK73GB1J221J	CHIP R 220 J 1/16W		
R779,780			RK73GB1J273J	CHIP R 27K J 1/16W		
R781,782			RK73GB1J123J	CHIP R 12K J 1/16W		
R783			RK73GB1J111J	CHIP R 110 J 1/16W		
R784,785			RK73GB1J221J	CHIP R 220 J 1/16W		
R786			RS14KB3D181J	FL-PROOF RS 180 J 2W		
R801			RK73GB1J103J	CHIP R 10K J 1/16W		
R802			RK73GB1J102J	CHIP R 1.0K J 1/16W		
R805			RK73FB2A470J	CHIP R 47 J 1/10W		
VR31			R12-3100-05	TRIMMING POT.(10K)		
W21			R92-1252-05	CHIP R 0 OHM		
W271,272			R92-1252-05	CHIP R 0 OHM		
W516			R92-1252-05	CHIP R 0 OHM		
W850			R92-1252-05	CHIP R 0 OHM		
Δ K401			S76-0102-05	MAGNETIC RELAY		
S1 -16			S70-0086-05	TACT SWITCH		
D1			MTZJ6.2(B)	ZENER DIODE		
D1			RD6.2ES(B)	ZENER DIODE		
D201			1SS133	DIODE		
D202,203			DA204U	DIODE		
D202,203			1SS302	DIODE		
D229			DA204U	DIODE		
D229			1SS302	DIODE		
D301,302			DA204U	DIODE		
D301,302			1SS302	DIODE		
D303			MTZJ5.1(B)	ZENER DIODE		
D303			RD5.1ES(B)	ZENER DIODE		
D405,406			D2SBA20F03	DIODE		

L : Scandinavia Y : PX(Far East,Hawaii) Y : AAFES(Europe)  
K : USA T : England X : Australia  
P : Canada E : Europe Q : Russia  
R : Mexico G : Germany H : Korea  
C : China V : China(Shanghai) M : Other Areas  
I : Malaysia  
Δ indicates safety critical components .



\* New Parts

Parts without **Parts No.** are not supplied.

Les articles non mentionnés dans le **Parts No.** ne sont pas fournis.

Teile ohne **Parts No.** werden nicht geliefert.

9

Ref. No	Add-ress	New Parts	Parts No.	Description	Desti-nation	Re-marks
D407,408 D410-415 D410-415 D416-418 D419			1SS133 S5688B 1T2 1SS133 S5688B	DIODE DIODE DIODE DIODE DIODE		
D419 D420-426 D427-430 D427-430 D431,432			1T2 1SS133 S5688B 1T2 MTZJ20(B)	DIODE DIODE DIODE DIODE ZENER DIODE		
D431,432 D433 D433 D434 D434			RD20ES(B) MTZJ4.7(B) RD4.7ES(B) MTZJ2.7(B) RD2.7ES(B)	ZENER DIODE ZENER DIODE ZENER DIODE ZENER DIODE ZENER DIODE		
D435 D435 D501 D502-504 ED1			MTZJ3.9(B) RD3.9ES(B) 1SS402 1SS133 HNA-15SM01T	ZENER DIODE ZENER DIODE DIODE DIODE FLUORESCENT INDICATOR TUBE		
IC1 IC21 IC22 IC23 IC25			LC75710NED AN8806SBM MN662748RPMFA AN4801SB-E1 BA05FP	MOS-IC ANALOGUE IC MOS-IC ANALOGUE IC ANALOGUE IC		
IC31 IC32 IC41 IC42 IC43			TA2099N LC72131 XC62HR5102P LA4262 TA7805S	ANALOGUE IC MOS-IC ANALOGUE IC ANALOGUE IC ANALOGUE IC		
IC44 IC51 IC52 IC53 IC54		*	AN80T03 M30622MCAB54FP S-80840ANY LC75343M TC7SH08FU	ANALOGUE IC MI-COM IC ANALOGUE IC ANALOGUE IC MOS-IC		
IC56 Q1 Q2 Q8 Q8			NJM4565MD 2SC4081(R,S) HN1C01F 2SC1740S(Q,R) 2SC2785(F,E)	IC(OP AMP X2) TRANSISTOR DUAL TRANSISTOR TRANSISTOR TRANSISTOR		
Q201 Q204 Q205 Q301 Q399			2SA1577(Q,R) 2SA1577(Q,R) 2SC4081(R,S) DTA114EUA 2SC4081(R,S)	TRANSISTOR TRANSISTOR TRANSISTOR DIGITAL TRANSISTOR TRANSISTOR		
Q401 Q401 Q402 Q402 Q403			2SC3940A(R,S) 2SD1768S 2SC1740S(Q,R) 2SC2785(F,E) 2SA1175(F,E)	TRANSISTOR TRANSISTOR TRANSISTOR TRANSISTOR TRANSISTOR		
Q403 Q404,405 Q406			2SA933AS(Q,R) 2SC2878(B) DTA124ESA	TRANSISTOR TRANSISTOR DIGITAL TRANSISTOR		
A1			W02-2734-05	OPTIC RECEIVING MODULE		

L : Scandinavia

Y : PX(Far East,Hawaii)

Y : AAFES(Europe)

K : USA

T : England

X : Australia

P : Canada

E : Europe

Q : Russia

R : Mexico

G : Germany

H : Korea

C : China

V : China(Shanghai)

M : Other Areas

I : Malaysia

Δ indicates safety critical components .

\* New Parts

Parts without **Parts No.** are not supplied.

Les articles non mentionnés dans le **Parts No.** ne sont pas fournis.

Teile ohne **Parts No.** werden nicht geliefert.

10

Ref. No	Add-ress	New Parts	Parts No.	Description	Desti-nation	Re-marks
A301			W02-2786-05	FM FRONT-END ASSY		
MD CONTROL (X33-1260-00)						
C1 C2 ,3 C5 C7 C8			CK73GB1C104K CE32AP0J101M CK73GB1C104K CK73GB0J474K CK73GF1E104Z	CHIP C CHIP EL CHIP C CHIP C CHIP C	0.10UF 100UF 0.10UF 0.47UF 0.10UF	K 6.3WV K K Z
C8 C9 C10 C11 C12			CK73GF1H104Z CK73GB1H472K CC73GCH1H101J CK73GB0J474K CK73GB1E153K	CHIP C CHIP C CHIP C CHIP C CHIP C	0.10UF 4700PF 100PF 0.47UF 0.015UF	Z K J K K
C13 C13 C14 C18 C22 ,23			CK73GF1E104Z CK73GF1H104Z CC73GCH1H100D CK73GB1E103K CK73GF1E104Z	CHIP C CHIP C CHIP C CHIP C CHIP C	0.10UF 0.10UF 10PF 0.010UF 0.10UF	Z Z D K Z
C22 ,23 C30 C31 C32 C35			CK73GF1H104Z CE32AP1C100M CE32AP0J101M CK73GB1H222K C92-0232-05	CHIP C CHIP EL CHIP EL CHIP C ELECTRO	0.10UF 10UF 100UF 2200PF 10UF	Z 16WV 6.3WV K 16WV
C36 C36 C37 C38 C38			CK73GF1E104Z CK73GF1H104Z CK73GB1H222K CK73GF1E104Z CK73GF1H104Z	CHIP C CHIP C CHIP C CHIP C CHIP C	0.10UF 0.10UF 2200PF 0.10UF 0.10UF	Z Z K Z Z
C39 C40 C41 C42 ,43 C45			C92-0232-05 C91-1597-05 C93-0032-05 CK73GB1H471K CE32AP0J101M	ELECTRO CERAMIC CHIP C CHIP C CHIP EL	10UF 4.7UF 10UF 470PF 100UF	16WV Z 10WV K 6.3WV
C46 -48 C46 -48 C51 C52 C52			CK73GF1E104Z CK73GF1H104Z C92-0232-05 CK73GF1E104Z CK73GF1H104Z	CHIP C CHIP C ELECTRO CHIP C CHIP C	0.10UF 0.10UF 10UF 0.10UF 0.10UF	Z Z 16WV Z Z
C54 C55 C56 C57 C58			CK73GB1E223K CK73GB1H102K CK73GF1A105Z CK73GB1C104K CK73GB1E103K	CHIP C CHIP C CHIP C CHIP C CHIP C	0.022UF 1000PF 1.0UF 0.10UF 0.010UF	K K Z K K
C59 C60 C62 C63 C64			CK73GB1E223K CE32AP1C100M CK73GB1C104K CK73GB1E103K CK73GB1E223K	CHIP C CHIP EL CHIP C CHIP C CHIP C	0.022UF 10UF 0.10UF 0.010UF 0.022UF	K 16WV K K K
C65 C66 C67 C68 C69			CK73GB1A224K CK73GF1A105Z CK73GB1H472K CK73GB1C683K CK73GB1E223K	CHIP C CHIP C CHIP C CHIP C CHIP C	0.22UF 1.0UF 4700PF 0.068UF 0.022UF	K Z K K K
C71 ,72 C71 ,72			CK73GF1E104Z CK73GF1H104Z	CHIP C CHIP C	0.10UF 0.10UF	Z Z

L : Scandinavia

Y : PX(Far East,Hawaii)

Y : AAFES(Europe)

K : USA

T : England

X : Australia

P : Canada

E : Europe

Q : Russia

R : Mexico

G : Germany

H : Korea

C : China

V : China(Shanghai)

M : Other Areas

I : Malaysia

Δ indicates safety critical components .

PARTS LIST

MDX-G2-S/-W/-Y

\* New Parts  
Parts without **Parts No.** are not supplied.  
Les articles non mentionnés dans le **Parts No.** ne sont pas fournis.  
Teile ohne **Parts No.** werden nicht geliefert.

11

Ref. No	Add-ress	New Parts	Parts No.	Description	Desti-nation	Re-marks
C73 ,74 C75 C75 C76 C80			CK73GF1A105Z CK73GF1E104Z CK73GF1H104Z CK73GB0J474K CE32AP0J101M	CHIP C 1.0UF Z CHIP C 0.10UF Z CHIP C 0.10UF Z CHIP C 0.47UF K CHIP EL 100UF 6.3WV		
C81 C81 C82 -85 C86 -89			CK73GF1E104Z CK73GF1H104Z CK73GB1H152K CC73GCH1H391J	CHIP C 0.10UF Z CHIP C 0.10UF Z CHIP C 1500PF K CHIP C 390PF J		
CN1 CN3			E40-8401-05 E40-8687-05	FLAT CABLE CONNECTOR FLAT CABLE CONNECTOR		
L1 -4 L1 -4 L8 L8 X1			L79-1216-05 L92-0075-05 L79-1216-05 L92-0075-05 L77-2328-05	LINE FILTER CHIP FERRITE LINE FILTER CHIP FERRITE CRYSTAL OSCILLATOR(16.9344MHZ)		
X2			L78-0722-05	OSCILLATOR (10MHZ)		
R3 -6 R8 -10 R12 R14 R15			RK73GB1J221J RK73GB1J103J RK73GB1J3R3J RK73GB1J104J RK73GB1J684J	CHIP R 220 J 1/16W CHIP R 10K J 1/16W CHIP R 3.3 J 1/16W CHIP R 100K J 1/16W CHIP R 680K J 1/16W		
R16 R17 R18 R19 R20			RK73GB1J101J RK73GB1J102J RK73GB1J332J RK73GB1J102J RK73GB1J151J	CHIP R 100 J 1/16W CHIP R 1.0K J 1/16W CHIP R 3.3K J 1/16W CHIP R 1.0K J 1/16W CHIP R 150 J 1/16W		
R21 ,22 R23 R24 -26 R30 R31			RK73GB1J103J RK73GB1J104J RK73GB1J101J R92-1969-05 R92-1970-05	CHIP R 10K J 1/16W CHIP R 100K J 1/16W CHIP R 100 J 1/16W METAL GLAZE 200 F 1/10W METAL GLAZE 360 F 1/16W		
R35 R36 ,37 R39 ,40 R41 R42			RK73GB1J1R0J RK73GB1J101J RK73GB1J471J RK73GB1J221J RK73GB1J133J	CHIP R 1 J 1/16W CHIP R 100 J 1/16W CHIP R 470 J 1/16W CHIP R 220 J 1/16W CHIP R 13K J 1/16W		
R43 R45 R46 R47 ,48 R49			RK73GB1J183J RK73GB1J332J RK73GB1J4R7J RK73GB1J473J RK73GB1J472J	CHIP R 18K J 1/16W CHIP R 3.3K J 1/16W CHIP R 4.7 J 1/16W CHIP R 47K J 1/16W CHIP R 4.7K J 1/16W		
R50 R51 R52 -55 R56 -58 R59 ,60			RK73GB1J101J RK73GB1J102J RK73GB1J474J RK73GB1J473J RK73GB1J103J	CHIP R 100 J 1/16W CHIP R 1.0K J 1/16W CHIP R 470K J 1/16W CHIP R 47K J 1/16W CHIP R 10K J 1/16W		
R62 R64 R65 ,66 R67 -69 R70			RK73GB1J473J RK73GB1J473J RK73GB1J101J RK73GB1J473J RK73GB1J3R3J	CHIP R 47K J 1/16W CHIP R 47K J 1/16W CHIP R 100 J 1/16W CHIP R 47K J 1/16W CHIP R 3.3 J 1/16W		
R71			RK73GB1J563J	CHIP R 56K J 1/16W		

L : Scandinavia    K : USA    P : Canada    R : Mexico    C : China    I : Malaysia  
Y : PX(Far East,Hawaii)    T : England    E : Europe    G : Germany    V : China(Shanghai)  
Y : AAFES(Europe)    X : Australia    Q : Russia    H : Korea    M : Other Areas    ⚠ indicates safety critical components .

\* New Parts  
Parts without **Parts No.** are not supplied.  
Les articles non mentionnés dans le **Parts No.** ne sont pas fournis.  
Teile ohne **Parts No.** werden nicht geliefert.

12

Ref. No	Add-ress	New Parts	Parts No.	Description	Desti-nation	Re-marks
R72 ,73 R75 ,76 R77 R78 R79			RK73GB1J133J RK73GB1J104J RK73GB1J103J RK73GB1J101J RK73GB1J561J	CHIP R 13K J 1/16W CHIP R 100K J 1/16W CHIP R 10K J 1/16W CHIP R 100 J 1/16W CHIP R 560 J 1/16W		
R80 R82 R83 ,84 R85 R86			RK73GB1J101J RK73GB1J101J RK73GB1J103J RK73GB1J222J RK73GB1J474J	CHIP R 100 J 1/16W CHIP R 100 J 1/16W CHIP R 10K J 1/16W CHIP R 2.2K J 1/16W CHIP R 470K J 1/16W		
R87 R88 R89 R93 R94			RK73GB1J335J RK73GB1J474J RK73GB1J472J RK73GB1J472J RK73GB1J681J	CHIP R 3.3M J 1/16W CHIP R 470K J 1/16W CHIP R 4.7K J 1/16W CHIP R 4.7K J 1/16W CHIP R 680 J 1/16W		
R95 R96 R97 R98 R99			RK73GB1J472J RK73GB1J104J R92-1853-05 R92-1854-05 RK73GB1J103J	CHIP R 4.7K J 1/16W CHIP R 100K J 1/16W CHIP-RN 1 J 1/4W RN 2.2 K 1/2W CHIP R 10K J 1/16W		
R100 R101-103 R112,113 R114,115 R116			RK73GB1J473J RK73GB1J102J RK73GB1J223J RK73GB1J104J RK73GB1J1R0J	CHIP R 47K J 1/16W CHIP R 1.0K J 1/16W CHIP R 22K J 1/16W CHIP R 100K J 1/16W CHIP R 1 J 1/16W		
R117,118 R119,120 R121 R122,123 R124-126			RK73GB1J183J RK73GB1J104J RK73GB1J183J RK73GB1J104J RK73GB1J183J	CHIP R 18K J 1/16W CHIP R 100K J 1/16W CHIP R 18K J 1/16W CHIP R 100K J 1/16W CHIP R 18K J 1/16W		
R127,128 R129 W2 -6			RK73GB1J104J RK73GB1J514J R92-0679-05	CHIP R 100K J 1/16W CHIP R 510K J 1/16W CHIP R 0 OHM		
S1 S2 ,3 S4 S5			S68-0133-05 S64-0052-05 S68-0132-05 S64-0052-05	PUSH SWITCH LEVER SWITCH PUSH SWITCH LEVER SWITCH		
D1 ,2 D3 ,4 D5 ,6 IC1 IC2			FS1J6TP MA111 S1B CXD2662R CXA2523AR	DIODE DIODE DIODE MOS-IC IC(RF SERVO)		
IC2 IC3 IC4 IC5 IC6			CXA2523AR* HD6432227N14FA BA5984FP LC32S4400T-10 RC1117ST	IC IC IC(CD POWER DRIVER) IC IC(ANALOGUE IC)		
IC7 IC7 IC8 IC10 IC11			BR24C02F S-24C02BFJ-TB BD7910FV AK4550VT C6006AZ	IC(E2PROM) IC(MEMORY IC) MOS-IC MOS-IC IC(CLOCK GENERATOR IC)		
Q1 Q2			UMW1N 2SA1576A(R,S)	TRANSISTOR TRANSISTOR		

L : Scandinavia    K : USA    P : Canada    R : Mexico    C : China    I : Malaysia  
Y : PX(Far East,Hawaii)    T : England    E : Europe    G : Germany    V : China(Shanghai)  
Y : AAFES(Europe)    X : Australia    Q : Russia    H : Korea    M : Other Areas    ⚠ indicates safety critical components .

\* New Parts  
Parts without **Parts No.** are not supplied.  
Les articles non mentionnes dans le **Parts No.** ne sont pas fournis.  
Teile ohne **Parts No.** werden nicht geliefert.

13


Ref. No	Add-ress	New Parts	Parts No.	Description	Desti-nation	Re-marks
Q3 Q4 Q5 ,6 Q7 Q8			2SB798-DL DTA144EUA DTC114YUA DTA124EUA DTC124EUA	TRANSISTOR DIGITAL TRANSISTOR DIGITAL TRANSISTOR DIGITAL TRANSISTOR DIGITAL TRANSISTOR		
Q9 Q10 Q11			2SA1576A(R,S) DTC124EUA DTA144EUA	TRANSISTOR DIGITAL TRANSISTOR DIGITAL TRANSISTOR		
MD MECHANISM (D40-1715-05)						
201 202 203 204 205	1B 2B 2B 3A 2B		A10-3531-08 J19-6125-08 G02-1716-08 D13-2510-08 D10-3958-08	CHASSIS TU BRACKET ASSY FLAT SPRING THRUST RACK GEAR LEVER LIMIT		
206 207 208 209 210	2A 2A 2A 1A 2A		A11-1189-08 D10-3959-08 D10-3961-08 D10-3963-08 D13-2511-08	SUB CHASSIS ASSY ARM ASSY MAIN LEVER ASSY HEAD SLIDER MAIN GEAR FINAL		
211 212 213 215 216	3A 2B 1A 2B 2B		J19-6127-08 A15-0106-08 F11-0503-08 D10-3982-08 D10-3957-08	HOLD ASSY FRAME SHIELD CASE ROD SUB ROD		
218 219 220 221 224	1B 1B 2B 2B 2B		A11-1187-08 D13-2504-08 D13-2505-08 D13-2516-08 D13-2509-08	SUB CHASSIS ASSY,TU GEAR LOAD A GEAR LOAD B GEAR LOAD C GEAR INTERMEDIATE		
225 226 227 228 229	3A 3A 2B 1B 2B		D10-3964-08 D10-3965-08 J02-1492-08 G01-4230-08 G01-4231-08	SLIDER LOAD ARM LOAD INSULATOR TORSION SPRING SPM TENSION SPRING		
230 231 232 233 234	2A 2A 3A 3B 3A		G01-4235-08 G01-4233-08 G01-4234-08 N39-1745-46 N09-3104-05	TENSION SPRING TORSION SPRING TENSION SPRING SCREW M1.7X4.5 SCREW M1.7X2		
235 236 237 238 239	3A,2B 2A,2B 2B 1B 1B,2B		N09-3279-05 N09-5113-08 N09-5229-08 N09-5230-08 N09-5231-08	SCREW M1.7X3 SCREW 1.7X7 SCREW 1.4X1.8 SCREW 1.4X2.2 SCREW 1.7X4		
240 241 242 243 244	1A 2A,2B 2B 2A 2B		N86-2004-46 N19-0366-04 N19-1511-08 N19-1171-04 N09-5285-08	SCREW 2X4 FLAT WASHER 2.1X4X0.5 FLAT WASHER 2.5X0.9X0.25 FLAT WASHER 1.6X3.5X0.25 SCREW M1.7X4.5		
250 251 255 256 257	3B,2E 3B 2B 3B 3B		E35-2824-08 E35-2348-18 D13-2506-08 G16-1236-08 G11-2825-08	FLAT CABLE FLAT CABLE PU,21P GEAR ASSY SHEET TAPE		

L : Scandinavia K : USA P : Canada R : Mexico C : China I : Malaysia  
Y : PX(Far East,Hawaii) T : England E : Europe G : Germany V : China(Shanghai)  
Y : AAFES(Europe) X : Australia Q : Russia H : Korea M : Other Areas  indicates safety critical components .

\* New Parts  
Parts without **Parts No.** are not supplied.  
Les articles non mentionnes dans le **Parts No.** ne sont pas fournis.  
Teile ohne **Parts No.** werden nicht geliefert.

14

Ref. No	Add-ress	New Parts	Parts No.	Description	Desti-nation	Re-marks
DMMD FMMD LMMD PUMD RHMD	1B 2A 1B 3A 3A		T42-0983-05 T42-0985-08 T42-0984-08 T25-0085-05 T30-0027-05	MOTOR ASSY MOTOR ASSY FEED MOTOR ASSY LOAD PICKUP RECORD HEAD		

L : Scandinavia K : USA P : Canada R : Mexico C : China I : Malaysia  
Y : PX(Far East,Hawaii) T : England E : Europe G : Germany V : China(Shanghai)  
Y : AAFES(Europe) X : Australia Q : Russia H : Korea M : Other Areas  indicates safety critical components .

PARTS LIST

MDX-G2-S/-W/-Y

# MDX-G2-H/-L

## SPECIFICATIONS

### Amplifier section

Rated output power during STEREO operation  
1kHz, 10%, 4Ω..... 3.5 W + 3.5 W

### Tuner section

FM tuner  
Tuning frequency range.....87.5 MHz ~ 108 MHz  
AM tuner  
Tuning frequency range .....531 kHz ~ 1,602 kHz

### MD Recorder section

Laser wave length ..... 765 to 805 nm  
Laser power class ..... Class 3B  
Laser..... Semiconductor laser  
Recording method .....Field modulating overwriting  
Audio compression method .....ATRAC,ATRAC3  
D/A conversion.....1 Bit  
Wow & flutter .....Unmeasurable limit

### CD Player section

Laser wave length ..... 770 to 795 nm  
Laser power class ..... Class 3A  
Laser..... Semiconductor laser  
D/A conversion .....1 Bit  
Over sampling frequency .....8 fs (352.8 kHz)  
Frequency response .....20 Hz to 20 kHz  
Wow & flutter .....Unmeasurable limit

### Speakers

Enclosures ..... Bass-reflex type  
Speaker units ..... 80 mm, cone type

### General

Power consumption ..... 35 W  
Dimensions ..... W : 386 mm (16-1/8")  
H : 146 mm (5-3/4")  
D : 189 mm (7-7/16")  
Weight (net) ..... 5.6 kg (12.3lb)

- KENWOOD follows a policy of continuous advancements in development. For this reason specifications may be changed without notice.
- Sufficient performance may not be exhibited at extremely cold locations (Where water freezes).

#### Note:

Component and circuit are subject to modification to insure best operation under differing local conditions. This manual is based on Europe (E) standard, and provides information on regional circuit modification through use of alternate schematic diagrams, and information on regional component variations through use of parts list.

## KENWOOD CORPORATION

14-6,Dogenzaka 1-chome, Shibuya-ku, Tokyo, 150-8501 Japan

### KENWOOD SERVICE CORPORATION

P.O BOX 22745, 2201 East Dominguez St., Long Beach, CA 90801-5745, U.S.A.

### KENWOOD ELECTRONICS CANADA INC.

6070 Kestrel Road, Mississauga, Ontario, Canada L5T 1S8

### KENWOOD ELECTRONICS LATIN AMERICA S.A.

P.O BOX 55-2791, Piso 6 plaza Chase, Cl. 47 y Aquilino de la Guardia Panama, Republic de Panama

### KENWOOD ELECTRONICS BRASIL LTDA.

Av. Moema, 170-17, Andar-Cobertura "B", Ed. Maximum Service Center, 04077-020 Moema, São Paulo-SP-Brasil

### KENWOOD ELECTRONICS U.K. LIMITED

KENWOOD House, Dwight Road, Watford, Herts., WD1 8EB., United Kingdom

### KENWOOD ELECTRONICS BELGUM N.V.

Meachelsesteenweg 418, B-1930 Zaventem, Belgium

### KENWOOD ELECTRONICS DEUTSCHLAND GMBH

Rembrücker Str. 15, 63150 Heusenstamm, Germany

### KENWOOD ELECTRONICS FRANCE S.A.

13 Boulevard Ney, 75018 Paris, France

### KENWOOD ELECTRONICS ITALIA S.p.A.

Via G. Sirtori, 7/9 20129, Milano, Italy

### KENWOOD IBÉRICA S.A.

Bolivia, 239-08020 Barcelona, Spain

### KENWOOD ELECTRONICS AUSTRALIA PTY. LTD.

(A.C.N. 001 499 074)  
16 Giffnock Avenue, North Ryde, N.S.W. 2113, Australia

### KENWOOD ELECTRONICS (HONG KONG) LTD.

Unit 3712-3724, Level 37, Tower 1, Metroplaza, 223 Hing Fong Road, Kwai Fong N.T., Hong Kong

### KENWOOD ELECTRONICS GULF FZE

P.O.Box 61318, Jebel Ali, Dubai, U.A.E.

### KENWOOD ELECTRONICS SINGAPORE PTE LTD.

No. 1 Genting Lane #02-02, KENWOOD Building, Singapore, 349544

### KENWOOD ELECTRONICS (MALAYSIA) SDN BHD.

#4.01 Level 4, Wisma Academy Lot 4A, Jalan 19/1 46300 Petaling Jaya Selangor Darul Ehsan Malaysia

### KENWOOD ELECTRONICS (THAILAND) CO., LTD.

2019 New Pechburi Road, Bangkok, Huaykwang, Bangkok, 10320 Thailand